

GRCC Supplier Newsletter:

Doing Business with Grand Rapids Community College



Purchasing Department - DeVos Campus Administration Bldg., 1st Floor

Office Address: 415 Fulton St. E. - Grand Rapids, Michigan 49503-5926

Mailing Address: 143 Bostwick Avenue, NE - Grand Rapids, Michigan 49503-3295

Ph: 616.234.3850 – Fax: 616.234.4005 - purchasing@grcc.edu – www.grcc.edu/purchasing

From the Desk of Mansfield Matthewson



Greetings from GRCC!

Greetings to you all as we are embarking upon a new fall semester! What can we say about the past several months as we all have endured the effects of a pandemic. We have all learned how to work and live in different ways, as we prepare for the new normal. Part of the new normal in my opinion is taking time to reflect upon the precious things in life which certainly includes friends and family.

So, what's new at GRCC? The answer is RENOVATIONS! We have recently celebrated [ribbon cuttings](#) for four new breathtakingly gorgeous facilities including Raleigh J. Finkelstein Hall, Steven C. Ender Hall, Custer Alumni House and an addition to the Wisner-Bottrall Applied Technology Center. Incredible that we have been able to complete these transformations in the midst of a pandemic. The pandemic also caused supply chain dilemmas, however we have been able to maintain. These accomplishments could not have been achieved without our valued partners our valued suppliers. We rely on your goods and services to operate the College in an efficient and affordable manner that enables us to achieve our strategic plan, as well as our Mission, Vision, Values and Goals. We thank you for your diligence and dedication.

As a means of keeping the GRCC supplier community informed, this newsletter will be issued periodically to enhance supplier communications and keep you abreast of important events at GRCC. We need the supplier community to partner with us to maintain and improve GRCC. Your suggestions are always welcomed! Feel free to contact us at any time as listed on the cover page.

Thank you!



Did you know?

[GRCC has a new Lakeshore Campus!](#)

Grand Rapids Community College and Ottawa County leaders are celebrating the opening of the new Lakeshore Campus and the transformation of a shuttered department store into a vibrant learning hub for students of all ages. Click [here](#) and [here](#) to read more.

[GRCC Lakeshore Ribbon Cutting Ceremony](#)

[GRCC has a newly selected member to the Board of Trustees](#)

Grand Rapids Community College trustees selected Salvador Lopez, a GRCC grad who heads a nonprofit aimed at helping children, to fill a board vacancy.

Lopez will replace Kathy Crosby, who resigned last month to spend more time with her family as she faces health challenges. Click [here](#) to read more.

[Partners: Kentwood donates truck to GRCC](#)



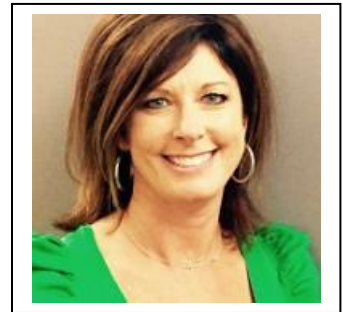
Students in Grand Rapids Community College's Public Works Academy gain hands-on experience preparing for rewarding careers in area municipalities -- a training that just got better through a donation from the City of Kentwood. Kentwood leaders delivered a 2005 Sterling dump truck with an underbody plow on Monday, which will help students prepare for a variety of roles in the field of public works. Click [here](#) to read more.

From the Desk of Melissa Davis

Happy Fall!

A lot has happened in the last one and a half years. We have learned that family, friends, neighbors, colleagues, suppliers and even strangers can band together during difficult times. Who would have thought that we would have a pandemic and certain commodities would become so hard to obtain? Masks, gloves, hand sanitizer, and wipes – *oh my!!* With that being said within the next few months we will be having some of our annual bids up for renewal. They will be posted at [Bid4Michigan](#). Some of them include Air Filters, Carpet/Vinyl Installation, Carpeting, Chiller & VRF, Electrical, Elevator, HVAC, Pest Control, Plumbing, Tree Maintenance & Water Treatment.

Please remember the Purchasing Department is always here to answer any of your questions. We can be reached at 616.234.3850 or purchasing@grcc.edu.



Have a great rest of 2021 and a FANTASTIC 2022!

Purchasing Pointers

The Purchasing Department serves the needs of the College for all purchases in excess of \$2500. Responsibility and authority to make commitments for these purchases is assigned to the Purchasing Department. This includes all contacts with suppliers regarding price, delivery, terms, or other matters of a contractual nature. Purchase of materials, equipment, goods, supplies or services greater than \$2500 shall not be made without the execution of GRCC purchase order.

GRCC is not obligated to pay for any purchases made otherwise.

GRCC Bid Opportunities!

GRCC typically advertises bid opportunities in excess of \$25,000.

GRCC will post construction bids and all other bid opportunities at [Bid4Michigan](#). Be sure to complete your free registration so that you may stay abreast of all GRCC opportunities.

GRCC utilizes the Bid4Michigan website as a primary means of public advertisement.

You can also locate GRCC bid opportunities on our own GRCC Bid opportunities webpage located [here](#).

- **Want to register as a supplier with GRCC?**
See [supplier application](#).
- **How to do business with GRCC?**
See [How to do Business with GRCC](#).
- **Questions about a recent award?**
See [Bid4Michigan](#) for award recommendations, or call the Purchasing Department to request a debriefing. Our staff will be happy to review bid results with you and answer your questions
- **Curious about GRCC Purchasing Policy?**
See [GRCC Purchasing Policy](#).
- **GRCC Purchasing Ethics**
The GRCC Purchasing Department is committed to adherence of the [CODE of Ethics](#) as defined by the [National Association of Educational Procurement](#). For information on expressing a concern, please see [GRCC Ethics Monitoring System](#) brochure.

GRCC Supplier Survey

We need your valued input! Please take a moment to respond to our [supplier survey](#) and thank you in advance!

GRCC COVID-19 Campus Protocols

For those suppliers who visit our campuses, please take a moment to familiarize yourself with [GRCC COVID-19 Campus Protocols](#).



GRCC Strategic Plan, 2018-2022

Regarding the strategic plan, President Bill Pink is quoted as follows:

“Grand Rapids Community College embraces the special role it plays in West Michigan.

We are called upon to serve all of the people who make up our community. Students of all ages and all abilities walk through our doors, and we are proud to help them all along an educational pathway to success.

It’s vitally important that we are relevant and responsive to our community. We must be the place where people turn to gain education and career skills. Our efforts must reflect the challenges faced by all of the people we serve and the goals they strive to reach. Together, we will make our community stronger.”

Our strategic plan is our roadmap as we move forward.

GRCC Vision, Mission, Values, & Goals

Vision

GRCC provides relevant educational opportunities that are responsive to the needs of the community and inspires students to meet economic, social, and environmental challenges to become active participants in shaping the world of the future.

Mission

GRCC is an open access college that prepares individuals to attain their goals and contribute to the community.

Values

- **Excellence** – We commit to the highest standards in our learning and working environments.
- **Diversity** – We create an inclusive, welcoming, and respectful environment that recognizes the value, diversity, and dignity of each person.
- **Responsiveness** – We anticipate and address the needs of students, colleagues, and community.
- **Innovation** – We seek creative solutions through collaboration, experimentation, and adaptation.
- **Accountability** – We set benchmarks and outcomes to frame our decision-making, measure our performance, and evaluate our results.
- **Sustainability** – We use resources in responsible ways to achieve equity across our social, economic, and environmental practices and policies.
- **Respect** – We treat others with courtesy, consideration, and civility.
- **Integrity** – We commit to GRCC values and take personal responsibility for our words and actions.

Goals

- **Teaching and Learning**
 - The College develops curriculum and curriculum delivery, and supports instruction that measurably improves student learning.
- **Completion and Transfer**
 - The College sustains and continuously improves our focus on successful student goal achievement whether that be completion of a degree/credential, transfer to another college, or personal interest/skill attainment.
- **Equity**
 - The College works to create and support equitable practices across the institution to remove barriers and ensure high comparable outcomes for all identifiable groups.
- **Community Impact**
 - The College seeks to positively impact the community by educating and training students with relevant skills so that they are retained in the service region holding living-wage jobs, as well as through collaborations/events with education and community partners.
- **Infrastructure and Sustainability**
 - The College effectively plans for and uses our resources to preserve and enhance the institution.



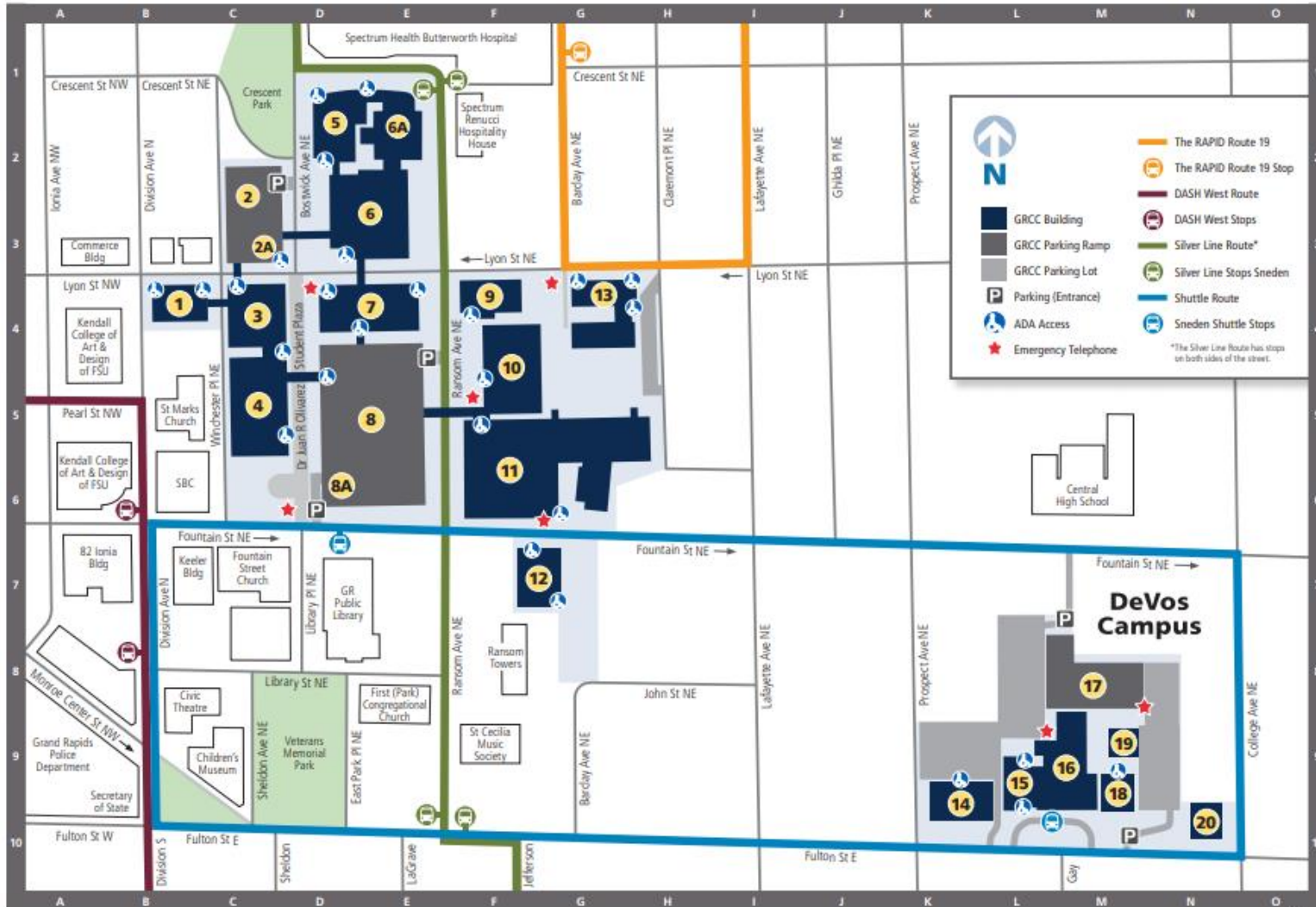
GRCC Campus Map:

GRCC Downtown Campus



DESTINATION NUMBER | LOCATION

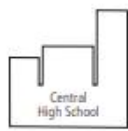
Administration Building	14	K-9
Albert P. Smith Music Center (MUSC)	9	F-4
Bostwick Office Suite	8A	D-6
Bostwick Parking Ramp	8	D-5
Student/Visitor Parking		
Calkins Science Center (SCIE)	5	D-2
Carriage House	19	M-9
College Park Plaza	1	B-4
Custer Alumni House	20	N-10
Ford Fieldhouse Natatorium	6A	E-2
Gerald R. Ford Fieldhouse (FORD)	6	D-3
GRCC Police	2A	C-3
Learning Center (Library) (LRC)	10	F-4
Lyon Parking Ramp	2	C-2
Student/Visitor Parking		
Peter and Pat Cook Academic Hall (COOK)	3	C-4
Phyllis Fratze Early Childhood Learning Laboratory (ECLL)	13	G-4
Raleigh J. Finkelstein Hall	4	C-5
Sneden Hall (SNEDEN)	16	M-9
Sneden Hall Parking	17	M-8
Student/Visitor Parking		
Spectrum Theater (SPEC)	12	F-7
Steven C. Ender Hall	18	M-9
Stewart Edward White Hall (White Hall)	15	L-9
Student Center (SCC)	7	D-4
Wisner-Botttrall Applied Technology Center (ATC)	11	F-5



Legend:

- GRCC Building
- GRCC Parking Ramp
- GRCC Parking Lot
- Parking (Entrance)
- ADA Access
- Emergency Telephone
- The RAPID Route 19
- The RAPID Route 19 Stop
- DASH West Route
- DASH West Stops
- Silver Line Route*
- Silver Line Stops Sneden
- Shuttle Route
- Sneden Shuttle Stops

*The Silver Line Route has stops on both sides of the street.



07/20